

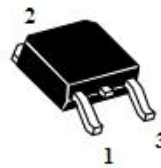
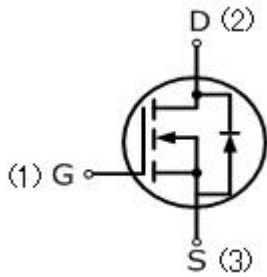


MIC-IRF830

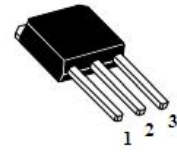
5 Amps, 500 Volts N-CHANNEL MOSFET

FEATURE

- 5A, 500V, $R_{DS(ON)MAX}=1.5 \Omega @V_{GS}=10V/2.5A$
- Low gate charge
- Low C_{iss}
- Fast switching
- 100% avalanche tested
- Improved dv/dt capability



TO-252



TO-251

Absolute Maximum Ratings ($T_C=25^\circ C$, unless otherwise noted)

Parameter	Symbol	MIC-IRF830	UNIT
Drain-Source Voltage	V_{DSS}	500	V
Gate-Source Voltage	V_{GSS}	± 30	
Continuous Drain Current	I_D	5	A
Pulsed Drain Current (Note 1)	I_{DM}	20	
Single Pulse Avalanche Energy (Note 2)	E_{AS}	250	mJ
Reverse Diode dV/dt (Note 3)	dv/dt	5	V/ns
Operating Junction and Storage Temperature Range	T_J, T_{STG}	-55 to +150	$^\circ C$
Maximum lead temperature for soldering purposes, 1/8" from case for 5 seconds	T_L	260	$^\circ C$

Thermal Characteristics

Parameter	Symbol	TO-252/251	Units
Thermal resistance, Channel to Case	$R_{th(ch-c)}$	1.67	$^\circ C/W$
Thermal resistance, Channel to Ambient	$R_{th(ch-a)}$	100	$^\circ C/W$
Maximum Power Dissipation	P_D	75	W

$T_C=25^\circ C$



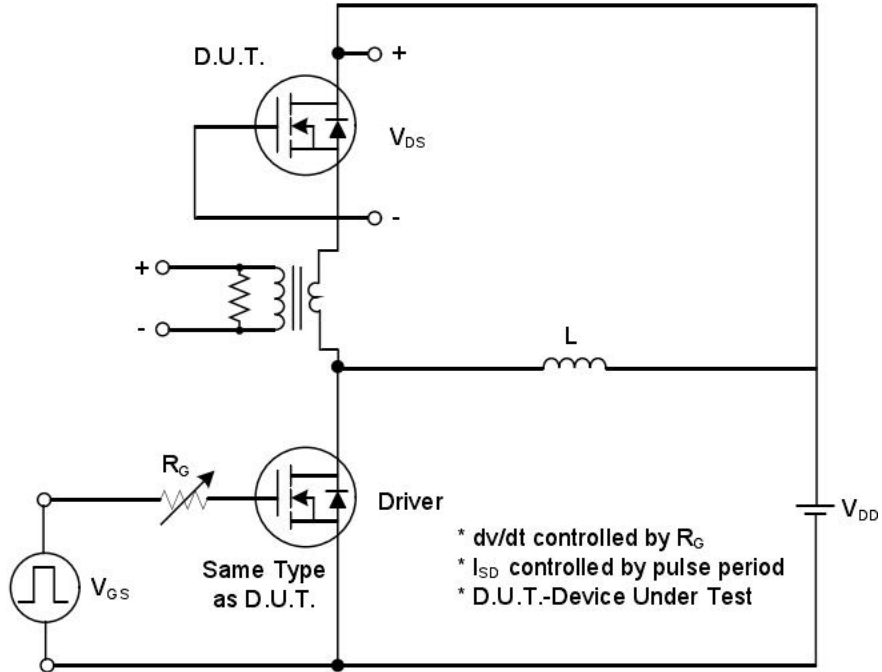
Electrical Characteristics ($T_c=25^\circ\text{C}$, unless otherwise noted)						
Parameter	Symbol	Test Conditions	Min	Typ	Max	Units
Off Characteristics						
Drain-Source Breakdown Voltage	BV_{DSS}	$V_{GS}=0V, I_D=250\mu\text{A}$	500	—	—	V
Breakdown Temperature Coefficient	$\Delta BV_{DSS} / \Delta T_J$	Reference to 25°C , $I_D=250\mu\text{A}$	—	0.6	—	$\text{V}/^\circ\text{C}$
Zero Gate Voltage Drain Current	I_{DSS}	$V_{DS}=500V, V_{GS}=0V$	—	—	1	μA
Gate-Body Leakage Current, Forward	I_{GSSF}	$V_{GS}=30V, V_{DS}=0V$	—	—	100	nA
Gate-Body Leakage Current, Reverse	I_{GSSR}	$V_{GS}=-30V, V_{DS}=0V$	—	—	-100	nA
On Characteristics						
Gate-Source Threshold Voltage	$V_{GS(th)}$	$V_{DS}=V_{GS}, I_D=250\mu\text{A}$	2	—	4	V
Drain-Source On-State Resistance	$R_{DS(on)}$	$V_{GS}=10V, I_D=2.5A$	—	1.3	1.5	Ω
Dynamic Characteristics						
Input Capacitance	C_{iss}	$V_{DS}=25V, V_{GS}=0V,$ $f=1.0\text{MHZ}$	—	584	—	pF
Output Capacitance	C_{oss}		—	61	—	pF
Reverse Transfer Capacitance	C_{rss}		—	4	—	pF
Switching Characteristics						
Turn-On Delay Time	$t_{d(on)}$	$V_{DD}=250V, I_D=5A,$ $R_G=10\Omega$ (Note3,4)	—	14	—	ns
Turn-On Rise Time	t_r		—	18	—	ns
Turn-Off Delay Time	$t_{d(off)}$		—	32	—	ns
Turn-Off Fall Time	t_f		—	11	—	ns
Total Gate Charge	Q_g	$V_{DS}=400V, I_D=5A,$ $V_{GS}=10V,$ (Note3,4)	—	12.6	—	nC
Gate-Source Charge	Q_{gs}		—	3.1	—	nC
Gate-Drain Charge	Q_{gd}		—	4.9	—	nC
Drain-Source Body Diode Characteristics and Maximum Ratings						
Continuous Diode Forward Current	I_S		—	—	5	A
Pulsed Diode Forward Current	I_{SM}		—	—	20	A
Diode Forward Voltage	V_{SD}	$I_S=5A, V_{GS}=0V$	—	—	1.5	V
Reverse Recovery Time	t_{rr}	$V_{GS}=0V, I_S=5A,$ $dI_F/dt=100A/\mu\text{s},$ (Note4)	—	328	—	ns
Reverse Recovery Charge	Q_{rr}		—	1555	—	μC

Notes

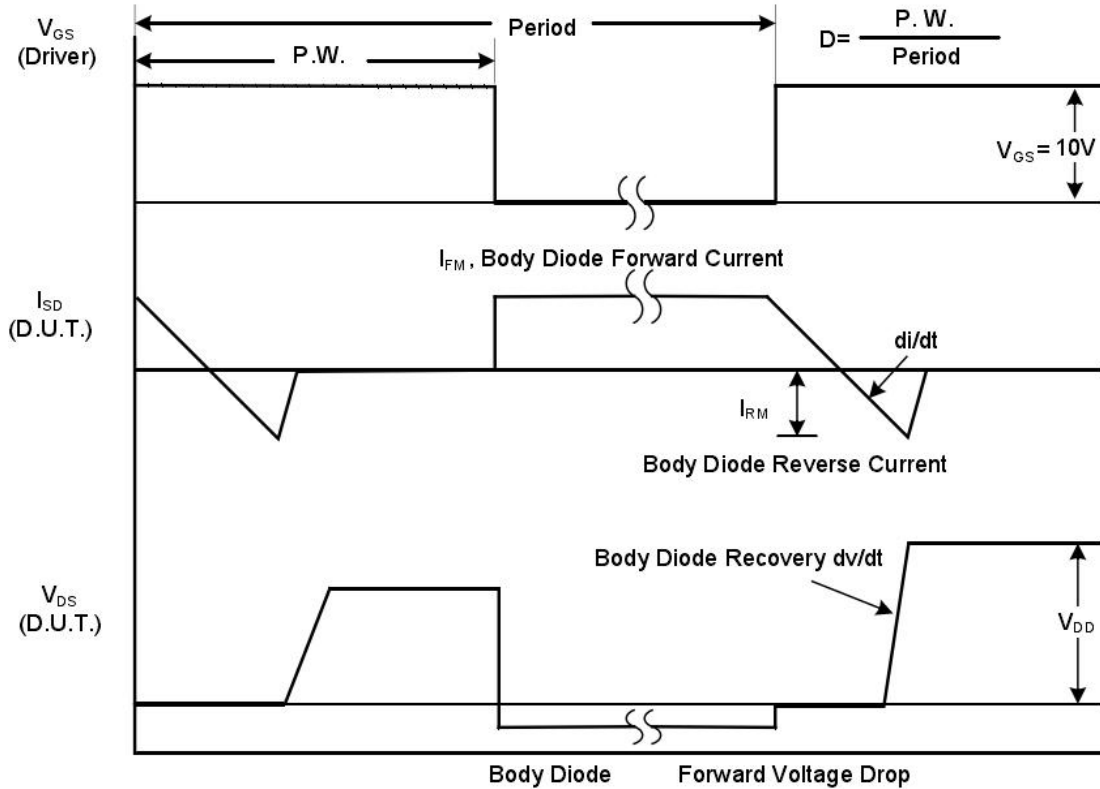
1. Repetitive Rating; pulse width limited by maximum junction temperature.
2. $L=10\text{mH}, I_{AS}=7.1A$, starting $T_J=25^\circ\text{C}$.
3. $I_{SD}=5A, dI/dt \leq 100A/\mu\text{s}, V_{DD} \leq BV_{DSS}$, starting $T_J=25^\circ\text{C}$, Pulse width $\leq 300\mu\text{s}$; duty cycle $\leq 2\%$.
4. Repetitive rating; pulse width limited by maximum junction temperature.



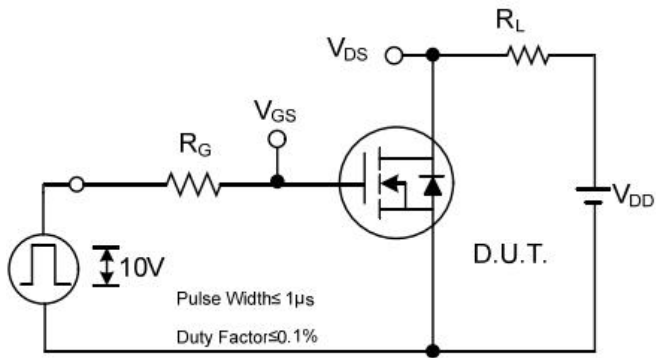
TEST CIRCUIT AND WAVEFORM



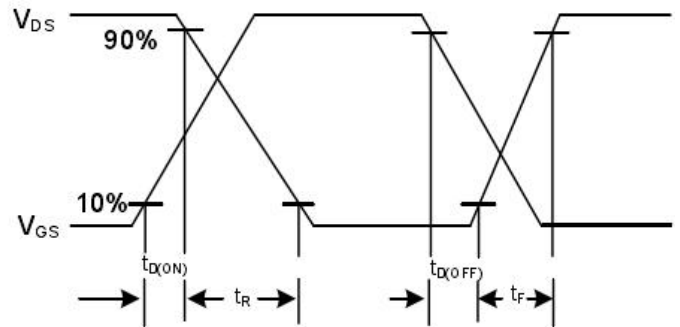
Peak Diode Recovery dv/dt Test Circuit



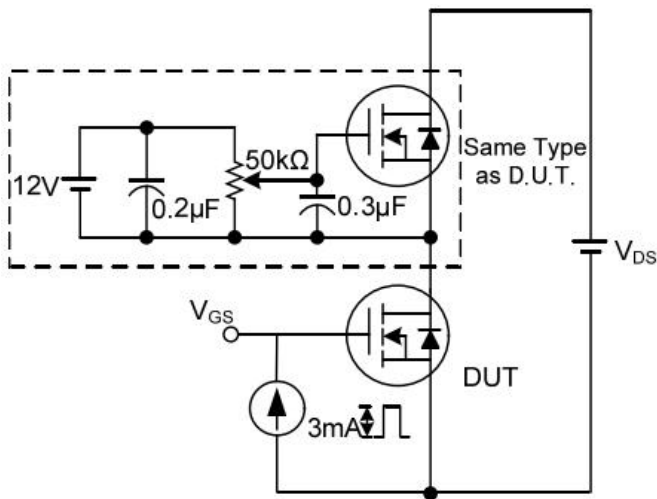
Peak Diode Recovery dv/dt Waveforms



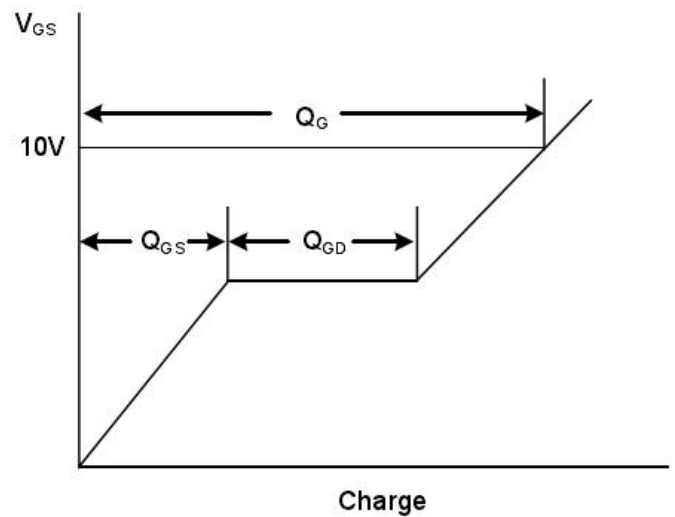
Switching Test Circuit



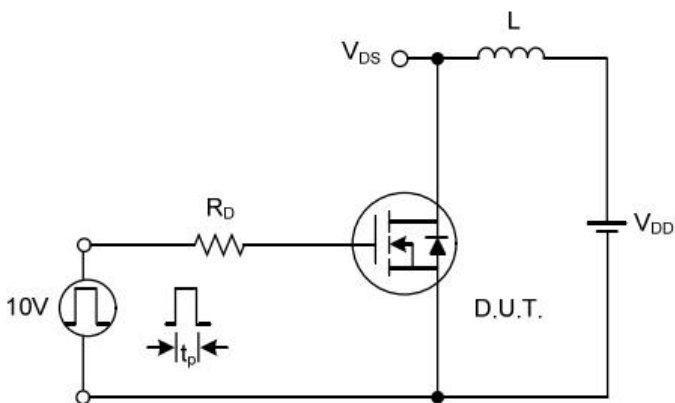
Switching Waveforms



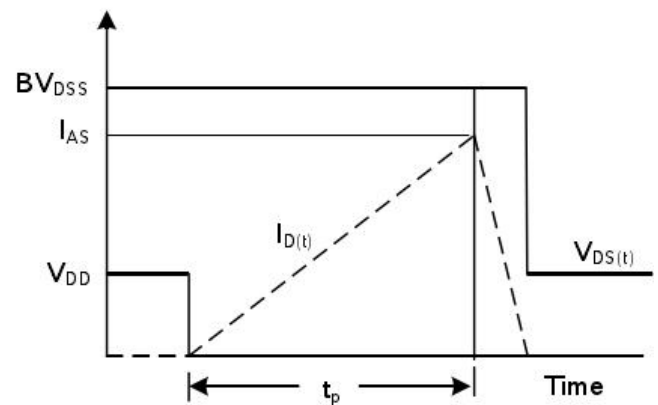
Gate Charge Test Circuit



Gate Charge Waveform



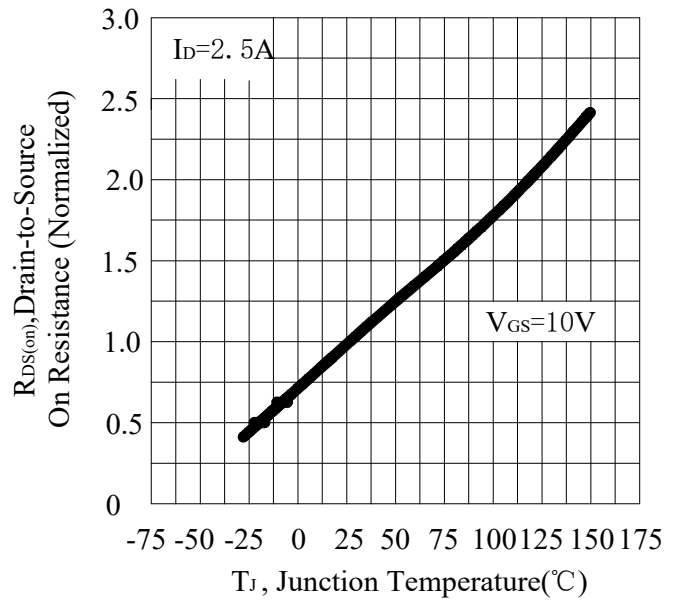
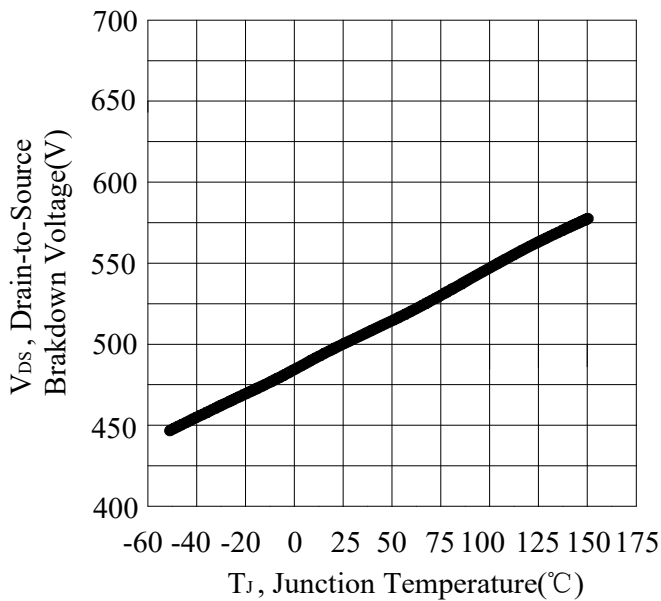
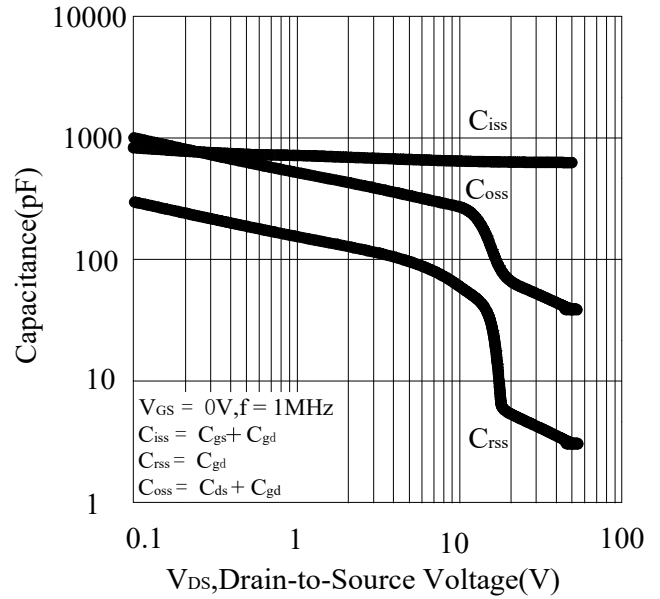
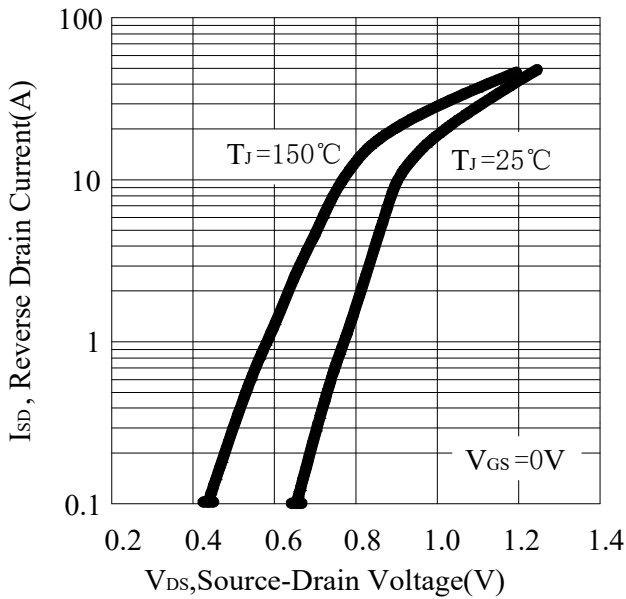
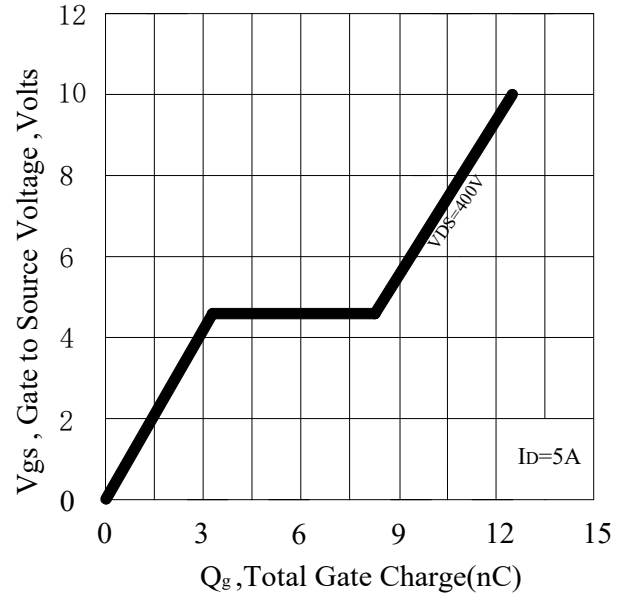
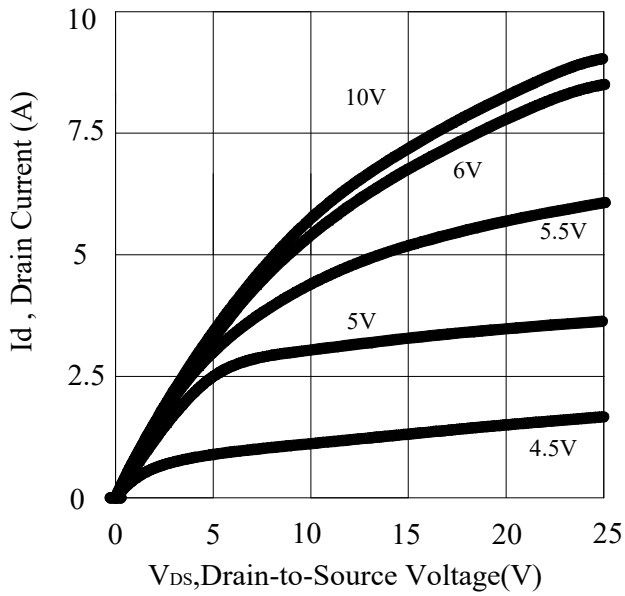
Unclamped Inductive Switching Test Circuit

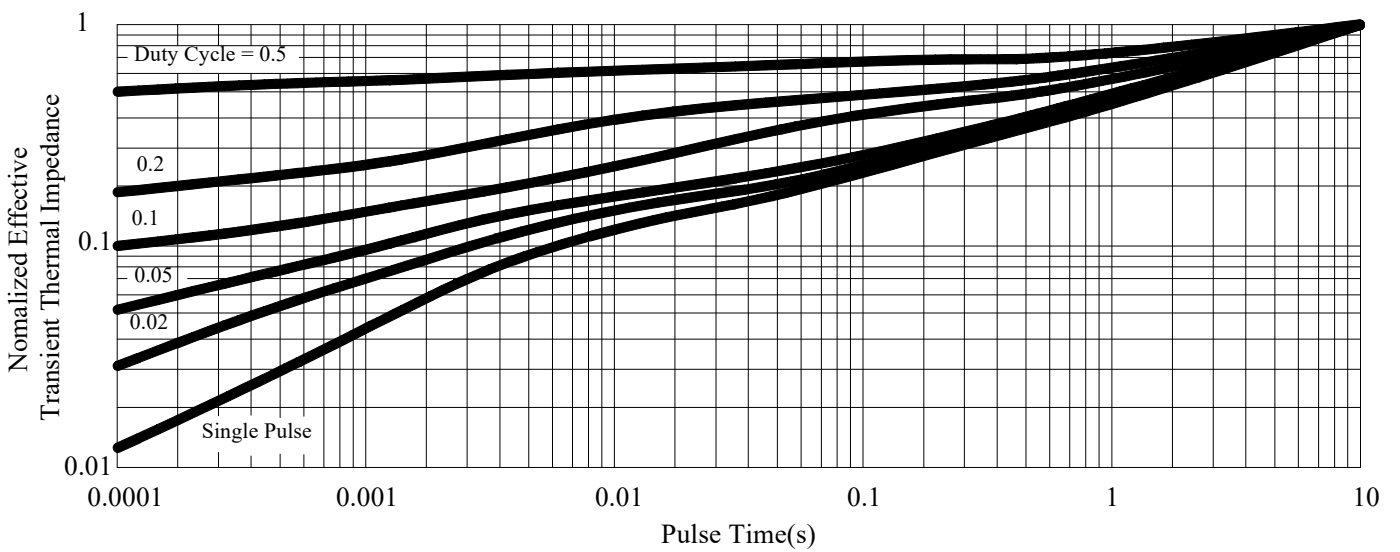
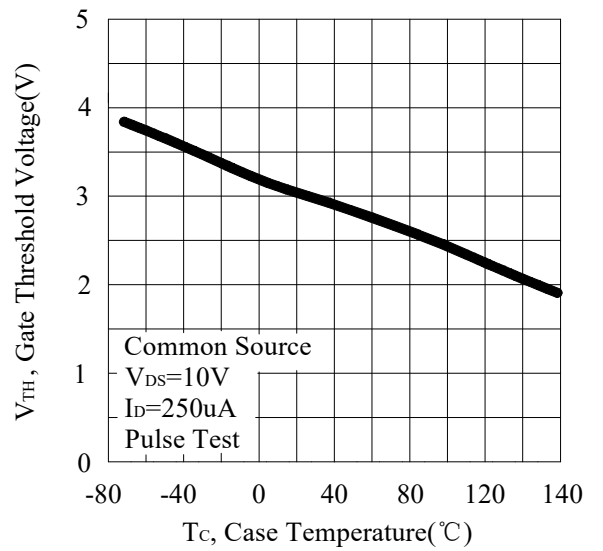
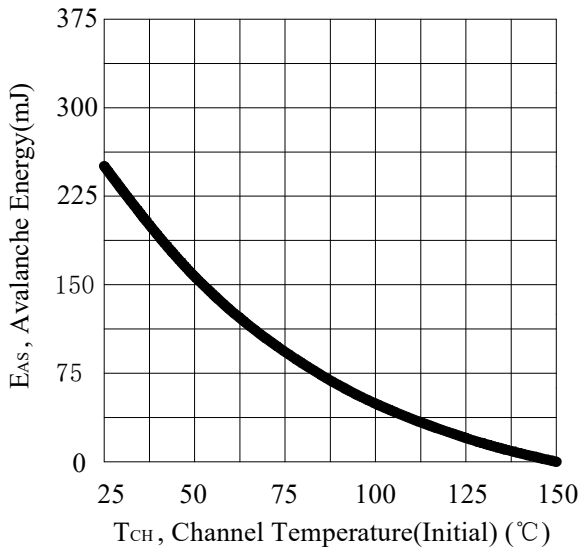
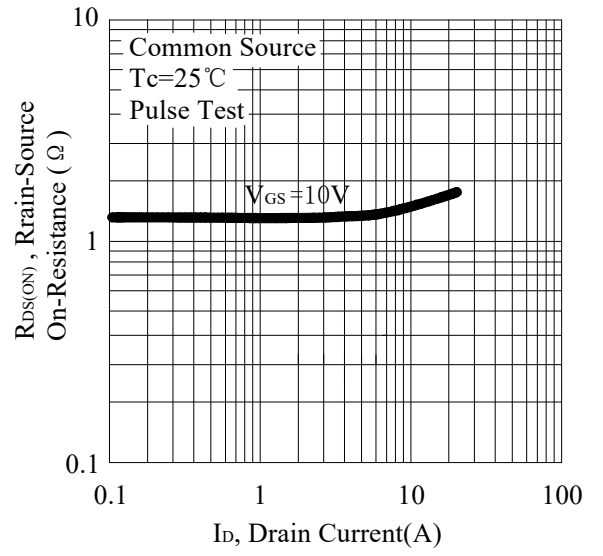
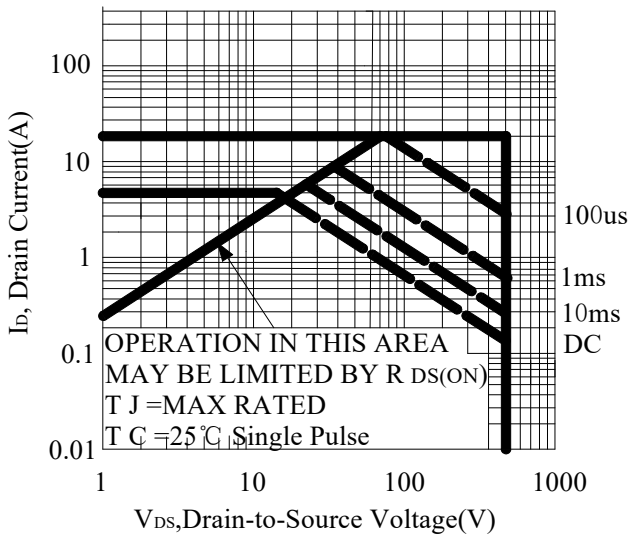


Unclamped Inductive Switching Waveforms



RATING AND CHARACTERISTIC CURVES

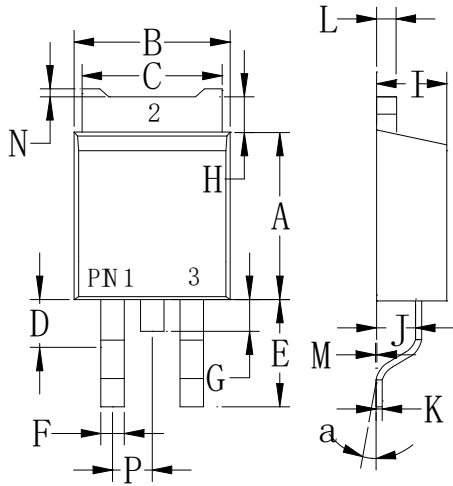






PACKAGE OUTLINE DIMENSIONS

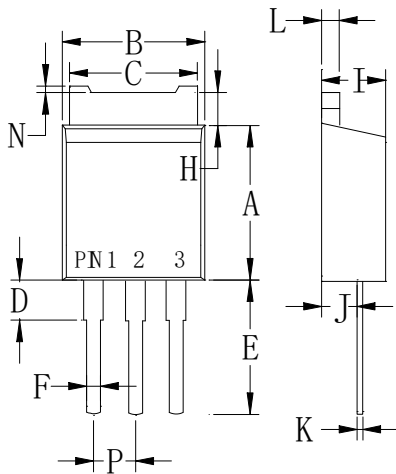
TO-252



TO-252		
Dim	Min	Max
A	.230 (5.85)	.246 (6.25)
B	.250 (6.35)	.264 (6.75)
C	.207 (5.27)	.218 (5.54)
D	.037 (0.93)	.045 (1.14)
E	.106 (2.70)	.138 (3.50)
F	.028 (0.72)	.033 (0.84)
G	.024 (0.60)	.041 (1.05)
H	.028 (0.72)	.043 (1.10)
I	.085 (2.15)	.096 (2.45)
J	.037 (0.95)	.047 (1.20)
K	.018 (0.45)	.026 (0.65)
L	.018 (0.45)	.024 (0.60)
P	.081 (2.05)	.094 (2.40)
M	.000 (0.00)	.006 (0.15)
N	---	.008 (0.20)
a	0°	10°

Dimensions in inches and (millimeters)

TO-251



TO-251		
Dim	Min	Max
A	.230 (5.85)	.246 (6.25)
B	.250 (6.35)	.266 (6.75)
C	.207 (5.27)	.218 (5.54)
D	.037 (0.93)	.045 (1.14)
E	.173 (4.40)	.205 (5.20)
F	.028 (0.72)	.033 (0.84)
H	.028 (0.70)	.043 (1.10)
I	.085 (2.15)	.096 (2.45)
J	.037 (0.95)	.047 (1.20)
K	.018 (0.45)	.026 (0.65)
L	.018 (0.45)	.024 (0.60)
N	---	.008 (0.20)
P	.081 (2.05)	.094 (2.40)

Dimensions in inches and (millimeters)